

## Production/Technology PR Report No.71

### 1. Outline of Firm

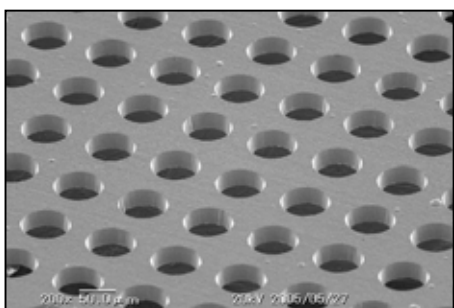
|                 |  |            |                        |                              |      |           |     |
|-----------------|--|------------|------------------------|------------------------------|------|-----------|-----|
| Name of Firm    | PROCESS LAB. MICRON CO.,<br>LTD.   |            | Name of Representative | Hisashi Ito                  |      |           |     |
|                 |  |            | Person in Charge       | Hidetaka Chiba               |      |           |     |
| Activities      | Manufacture of metal mask.   |            | U R L                  | http://www.lab-micron.co.jp/ |      |           |     |
| Main Products   | Semiconductor metal mask, implementation peripheral tool, fine processed products for implementing electronic parts. |            |                        |                              |      |           |     |
| Address         | 1-103-52, Yoshinodai, Kawagoe City, Saitama Pref.  |            |                        |                              |      |           |     |
| Tel. Number     | 049-226-3111   |            | FAX Number             | 049-226-3962                 |      |           |     |
| Capital (M yen) | 65   | Founded in | May 1964               | Sales (M yen)                | 2500 | Employees | 180 |

### 2. PR Items

*As a high-tech leader in this field, we expect your order  
for our metal mask for implementing electronic parts.*

We are a specialty manufacturer of metal masks for printing on cream solder indispensable for implementation of parts on a printed circuit. We are to top metal mask manufacturer in Japan having the entire processing systems including etching, plating, laser processing, etc. Depending on our customers' uses, we can present metal masks and peripheral equipment in the optimum method.

Development, manufacture, and sales of metal mask for implementing electronic parts, and peripheral



#### <Bump mask>

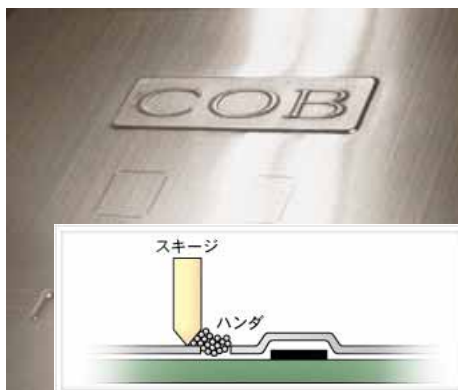
Aperture  $\phi 145 \mu\text{m}$   
pitch  $240 \mu\text{m}$ , plate thickness  $50 \mu\text{m}$



#### <Frameless mask system>

The "frameless mask system" is a system of attaching and detaching a mask used in combination with a metal mask stored as a single unit and a host frame capable of being used repeatedly only when printing is performed.

The tension balance of the host frame is not disordered because it is used as a combination of the polyester net and the metal.

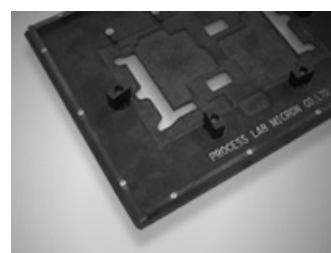


#### <Additive COB metal mask>

When the surface of a printed circuit is not smooth (rough, or parts are implemented), normal SMT implementation is performed using a COB (chip on board) metal mask.

#### <Carrier for flow/reflow>

Masking by a manual operation of a connector Coupling terminal unit, a chip implementation part, etc. can be omitted. The circuit can be prevented from curling during the soldering operation.



### 3. Remarks

- Acquired authentication of ISO9001 and ISO14001.
- Approved for bonus of creative technology research and development cost, etc. by Ministry of Economy, Trade, and Industry. Supported by Basic technology research promotion center for technological development. Recognized as compliance with the small-to-medium businesses creative activity promotion law of Saitama and Saga Prefectures.